


# Installation Instructions

## **Terminal heads TA21H, TA30A, TA30D, TA30H**

Sealing of the terminal heads for MID approval

**DE** Einbauanleitung: EA01116T →  &

**EN** Installation Instructions: EA01116T →  (

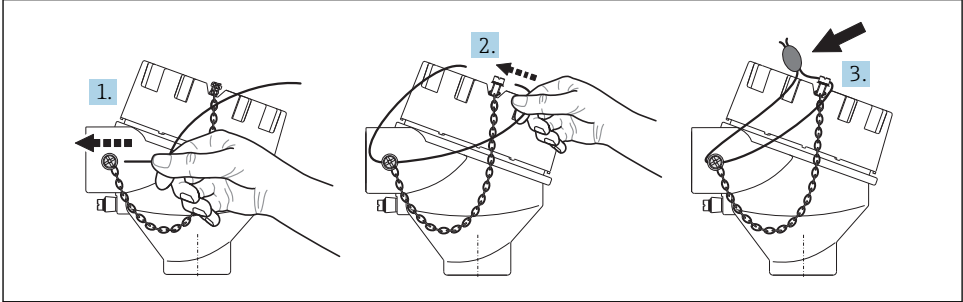
**Endress + Hauser**



People for Process Automation

# 1 Verplombung TA21H

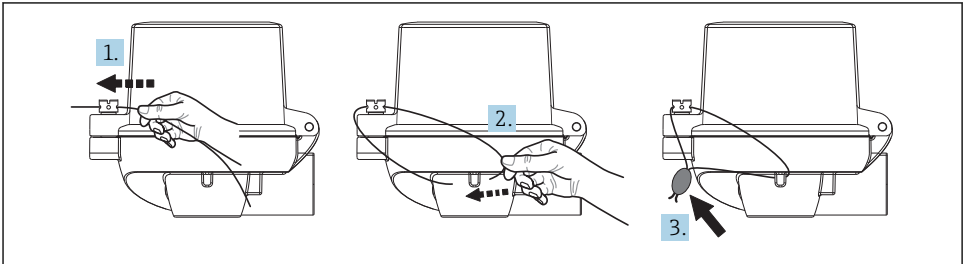
1. Den Draht durch das Schraubenloch ziehen, um den Anschlusskopf zu verplomben.
2. Den Draht an der Schraube befestigen, die sich am Anschlusskopfdeckel befindet.
3. Den Anschlusskopf mit dem Draht verplomben.



A0032529

# 2 Verplombung TA30A, TA30D

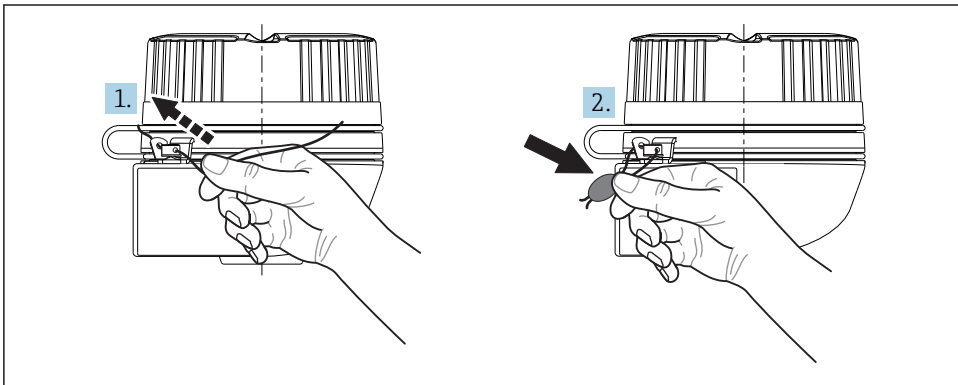
1. Den Draht durch das Schraubenloch ziehen, um den Anschlusskopf zu verplomben.
2. Den Draht durch das das Loch am Unterteil des Anschlusskopfes ziehen.
3. Den Anschlusskopf mit dem Draht verplomben.



A0032531

### 3 Verplombung TA30H

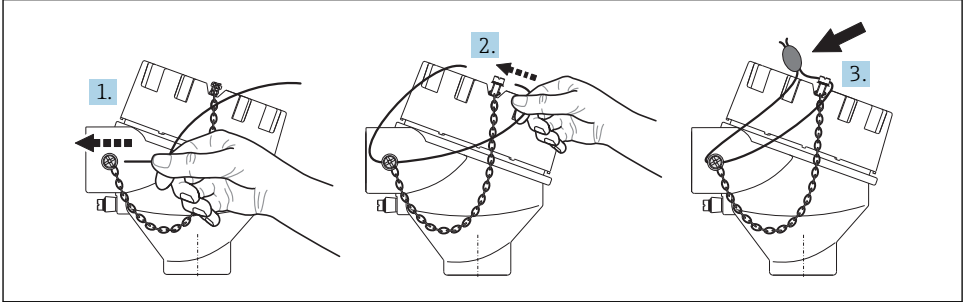
1. Den Draht durch das Schraubenloch sowie durch das Loch in der Deckelkralle ziehen, um den Anschlusskopf zu verplomben.
2. Den Anschlusskopf mit dem Draht verplomben.



A0032530

## 1 Sealing instructions for TA21H

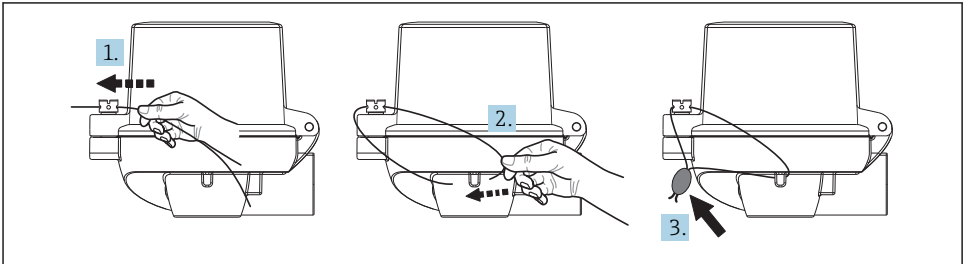
1. Put the iron wire through the screw hole in order to seal the head.
2. Fix the iron wire to the screw that is on the head's cover.
3. Seal the head with the iron wire.



A0032529

## 2 Sealing instructions for TA30A, TA30D

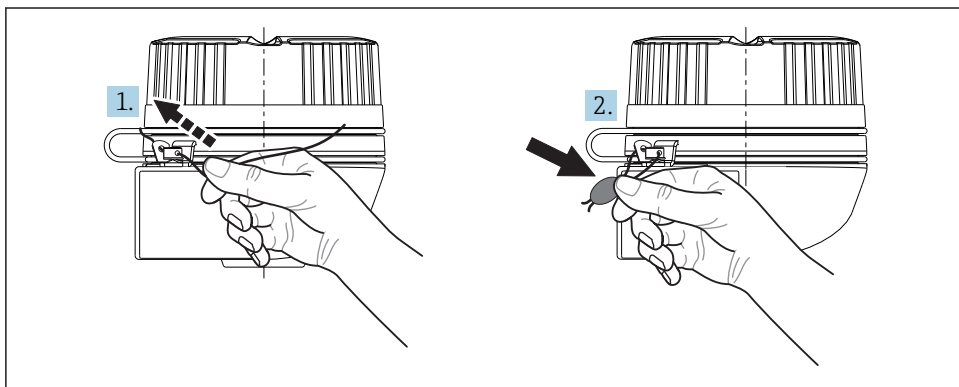
1. Put the iron wire through the screw hole in order to seal the head.
2. Fix the iron wire to the screw that is on the head's cover.
3. Seal the head with the iron wire.



A0032531

### 3 Sealing instructions for TA30H

1. Put the iron wire through the screw hole as well as through the hole in the cover clamp in order to seal the head.
2. Seal the head with the iron wire.



A0032530





[www.addresses.endress.com](http://www.addresses.endress.com)

---