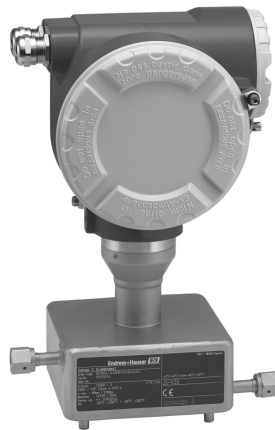


Technical Information

Cubemass

Coriolis flowmeter



The ultra-compact sensor for smallest quantities with easy system integration

Application

- Measuring principle operates independently of physical fluid properties such as viscosity or density
- Measuring accurately smallest quantities of liquids and gases; ideal for skid integration

Device properties

- Nominal diameter: DN 1 to 6 ($\frac{1}{24}$ to $\frac{1}{4}$ ")
- Process pressure up to 400 bar (5800 psi)
- Medium temperature up to +200 °C (+392 °F)
- Robust transmitter housing
- Modbus RS485
- Pulse output

Your benefits

- Reduced installation cost – compact single-tube design
- Fewer process measuring points – multivariable measurement (flow, density, temperature)
- Space-saving installation – no in/outlet run needs
- Cost savings – very low power consumption
- Fast commissioning – pre-configured devices
- Automatic recovery of data for servicing

Table of contents

Function and system design	3	System pressure	14
Measuring principle	3	Mechanical construction	15
Measuring system	4	Design/dimensions	15
Input	4	Weight	20
Measured variable	4	Material	20
Measuring range	4	Process connections	21
Operable flow range	4	Operability	21
Output	4	Local display	21
Output signal	4	Remote operation	21
Signal on alarm	5	Certificates and approvals	21
Load	5	CE mark	21
Galvanic isolation	5	C-Tick symbol	21
Power supply	5	Ex approval	21
Terminal assignment	5	Modbus certification	21
Supply voltage	5	Functional safety	21
Power consumption	5	Pressure measuring device approval	22
Power supply failure	6	Other standards and guidelines	22
Electrical connection	6	Ordering Information	22
Potential equalization	6	Accessories	23
Cable entries	6	Device-specific accessories	23
Cable specifications	6	Service-specific accessories	23
Performance characteristics	7	System components	24
Reference operating conditions	7	Documentation	24
Maximum measured error	7	Registered trademarks	24
Repeatability	8		
Response time	8		
Influence of medium temperature	8		
Influence of medium pressure	8		
Design fundamentals	9		
Installation	9		
Installation instructions	9		
Inlet and outlet runs	9		
Special installation instructions	10		
Environment	11		
Ambient temperature range	11		
Storage temperature	11		
Degree of protection	11		
Shock resistance	11		
Vibration resistance	11		
CIP cleaning	11		
SIP cleaning	12		
Electromagnetic compatibility (EMC)	12		
Process	12		
Medium temperature range	12		
Secondary containment pressure rating	12		
Pressure-temperature ratings	13		
Rupture disk	14		
Limiting flow	14		
Pressure loss	14		

Function and system design

Measuring principle

The measuring principle is based on the controlled generation of Coriolis forces. These forces are always present when both translational and rotational movements are superimposed.

$$F_C = 2 \cdot \Delta m (v \cdot \omega)$$

F_C = Coriolis force

Δm = moving mass

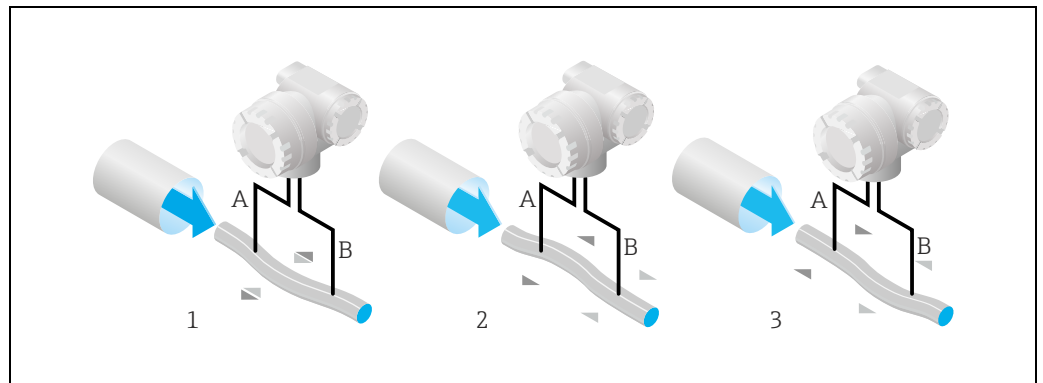
ω = rotational velocity

v = radial velocity in rotating or oscillating system

The amplitude of the Coriolis force depends on the moving mass Δm , its velocity v in the system, and thus on the mass flow. Instead of a constant angular velocity ω , oscillation occurs.

This causes the measuring tube loop through which the fluid is flowing to oscillate. The Coriolis forces produced at the measuring tube loop cause a phase shift in the oscillations of the tube loop (see illustration):

- If there is zero flow, i.e. when the fluid stands still, the oscillation measured at points A and B has the same phase, and thus there is no phase difference (1).
- Mass flow causes deceleration of the oscillation at the inlet of the tube loop (2) and acceleration at the outlet (3).



A0013128

The phase difference (A-B) increases with increasing mass flow. Electrodynamical sensors register the tube loop oscillations at the inlet and outlet.

Compared to two-tube systems, other design solutions are required in single-tube systems to ensure system balance. In the case of the Cubemass, an internal reference mass is provided for this purpose. The measuring principle operates independently of temperature, pressure, viscosity, conductivity and flow profile.

Density measurement

The measuring tube is continuously excited at its resonance frequency. A change in the mass and thus the density of the oscillating system (comprising the measuring tube loop and fluid) results in a corresponding, automatic adjustment in the oscillation frequency. Resonance frequency is thus a function of fluid density. The microprocessor utilizes this relationship to obtain a density signal.

Temperature measurement

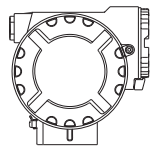
The temperature of the measuring tube loop is determined in order to calculate the compensation factor due to temperature effects.

This signal corresponds to the process temperature and is also available as an output.

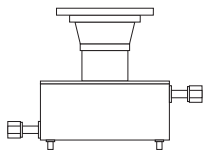
Measuring system

The measuring system consists of a transmitter and a sensor, which form a mechanical unit.

Transmitter

 <p style="text-align: right; font-size: small;">A0013123</p>	<ul style="list-style-type: none"> ▪ Configuration via MODBUS RS485, FieldCare ▪ Mass flow, volume flow, density and temperature measurement as well as calculated variables (e.g. fluid concentrations)
--	--

Sensor

 <p style="text-align: right; font-size: small;">A0011878</p>	<ul style="list-style-type: none"> ▪ Universal sensor for fluid temperatures up to 200 °C. ▪ Nominal diameters DN 1 to 6 ▪ Tube material: stainless steel
--	--

Input**Measured variable**

- Mass flow (proportional to the phase difference between two sensors mounted on the measuring tube to register a phase shift in the oscillation)
- Volume flow (calculated using mass flow and density)
- Fluid density (proportional to the resonance frequency of the measuring tube)
- Fluid temperature (measured with temperature sensors)

Measuring range**Measuring ranges for liquids**

DN		Range for full scale values (liquids) $\dot{m}_{\min(F)}$ to $\dot{m}_{\max(F)}$	
[mm]	[in]	[kg/h]	[lb/min]
1	$\frac{1}{24}$ "	0 to 20.00	0 to 0.735
2	$\frac{1}{12}$ "	0 to 100.0	0 to 3.675
4	$\frac{1}{6}$ "	0 to 450.0	0 to 16.54
6	$\frac{1}{4}$ "	0 to 1000	0 to 36.75

Operable flow range

1:100

Output**Output signal**

Pulse/frequency output

- passive
- galvanically isolated
- Open Collector
- max. 30 V DC
- max. 25 mA
- Frequency output: end frequency 100 to 5000 Hz, on/off ratio 1:1, pulse width max. 2 s
- Pulse output: pulse value and pulse polarity selectable, pulse width configurable (0.1 to 1000 ms)

Status output

- passive
- Open Collector
- max. 30 V DC
- max. 25 mA

MODBUS RS485

- MODBUS device type: slave
- Address range: 1 to 247
- Functions codes supported: 03, 04, 06, 08, 16, 23
- Broadcast: supported with the function codes 06, 16, 23
- Physical interface: RS485 in accordance with standard EIA/TIA-485
- Baudrate supported: 1200, 2400, 4800, 9600, 19200, 38400, 57600, 115200 Baud
- Transmission mode: RTU or ASCII
- Response time: typically 5 ms

Signal on alarm*Pulse/frequency output*

De-energized in the event of fault or power supply failure

Status output

De-energized in the event of fault or power supply failure

MODBUS RS485

De-energized in the event of fault or power supply failure

Load

→ "Output signal"

Galvanic isolation

All circuits for outputs and power supply are galvanically isolated from each other.

Power supply

Terminal assignment

Order characteristic for "inputs/outputs"	Terminal No. (outputs)		
	22 (+) / 23 (-)	24 (+) / 25 (-)	26 (+) / 27 (-)
Fixed communication board (permanent assignment)			
B	Pulse / frequency /status output 2	Pulse / frequency /status output 1	MODBUS RS485

Supply voltage

24 V DC nominal voltage (20 to 30 V DC) / 24 V AC nominal voltage (20 to 28 V AC)

Power consumption

AC: < 4.0 VA

DC: < 3.2 W

Typical switch-on current at 24 V DC nominal voltage at $R_i = 0.1$ W of the source.

t [ms]	I [A]
0	10.0
0.1	8.0
0.2	7.5
0.5	7.0
1.0	6.0
2.0	4.0
5.0	1.5
10.0	0.125 (operating current)



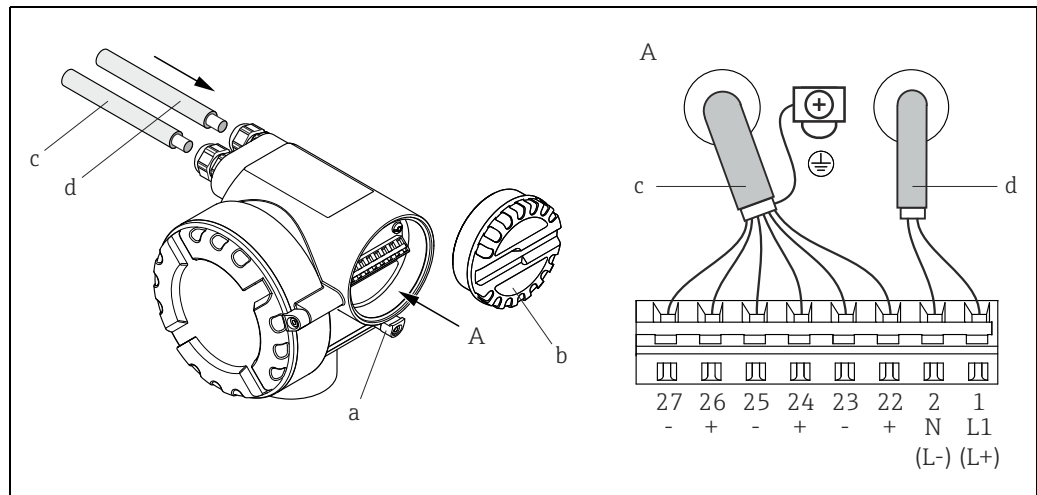
Note!

The internal resistance of the source may not exceed $R_i = 10$ W.

Power supply failure

Lasting min. 20 ms:

- HistoROM/S-DAT: exchangeable data storage chip which stores the data of the sensor (nominal diameter, serial number, calibration factor, zero point etc.)

Electrical connectionConnecting the transmitter, cable cross-section: max. 2.5 mm² (14 AWG)

A View A

a Safety claw

b Connection compartment cover

c Signal cable: terminal Nos. 22 to 27

(shield for MODBUS RS485 is mandatory; shield for pulse, frequency and status outputs is not required, but recommended)

d Cable for power supply: 20 to 28 V AC, 10 to 30 V DC

- Terminal No. 1: L1 for AC, L+ for DC

- Terminal No. 2: N for AC, L- for DC

Potential equalization

No measures necessary.

For explosion-protected equipment → separate Ex-documentation supplied

Cable entries

Power supply and signal cables (outputs):

- Cable entry M20 × 1.5 (8 to 12 mm / 0.31 to 0.47")
- Threads for cable entries, ½" NPT, G ½"

Cable specifications

Each compatible cable, with a temperature specification at least 20°C (68 °F) higher than the ambient temperature prevailing in the application. We recommend using a cable with a temperature specification of +80°C (176 °F).

MODBUS RS485 (cable type A):

- Characteristic impedance: 135 to 165 Ω at a measuring frequency of 3 to 20 MHz
- Cable capacity: < 30 pF/m (< 9.2 pF/ft)
- Core cross-section: > 0.34 mm² (AWG 22)
- Cable type: twisted pairs
- Loop-resistance: ≤ 110 Ω/km (≤ 0.034 Ω/ft)
- Signal damping: max. 9 dB along the entire length of the cable cross-section
- Shield: Copper braided shielding or braided shielding and foil shielding


Performance characteristics

Reference operating conditions

- Error limits following ISO 11631
- Water, typically +15 to +45 °C (+59 to +113 °F); 2 to 6 bar (29 to 87 psi)
- Specification as per calibration protocol ± 5 °C (± 9 °F) and ± 2 bar (± 30 psi)
- Data on the measured error based on accredited calibration rigs traced back to ISO 17025

To obtain measured errors, use the Applicator sizing tool *Applicator*: →  23.

Maximum measured error

Design fundamentals →  9

o.r. = of reading; $1 \text{ g/cm}^3 = 1 \text{ kg/l}$; T = fluid temperature

Base accuracy


Mass flow and volume flow (liquids)

- $\pm 0.10\%$ o.r. (mass flow)
- $\pm 0.10\%$ o.r. (volume flow)

Mass flow (gases)

- $\pm 0.5\%$ o.r.

Density (liquids)

- Reference conditions: $\pm 0.0005 \text{ g/cm}^3$
- Standard density calibrations: $\pm 0.02 \text{ g/cm}^3$ (valid over the entire measuring range of the sensor →  13)
- Wide-range density specification: $\pm 0.002 \text{ g/cm}^3$ (valid range for special density calibration: +5 to +80 °C (+41 to +176 °F))

Temperature

$\pm 0.5 \text{ °C} \pm 0.005 \cdot T \text{ °C}$ ($\pm 1.0 \text{ °F} \pm 0.003 \cdot (T - 32) \text{ °F}$)

Zero point stability

DN		Zero point stability	
[mm]	[in]	[kg/h]	[lb/min]
1	$\frac{1}{24}$ "	0.0008	0.00003
2	$\frac{1}{12}$ "	0.002	0.00007
4	$\frac{1}{8}$ "	0.014	0.0005
6	$\frac{1}{4}$ "	0.02	0.0007

Flow values

Flow values as turndown parameter depending on nominal diameter.

SI units

DN [mm]	1:1 [kg/h]	1:10 [kg/h]	1:20 [kg/h]	1:50 [kg/h]	1:100 [kg/h]	1:500 [kg/h]
1	20.00	2.000	1.000	0.400	0.200	0.040
2	100.0	10.00	5.000	2.000	1.000	0.200
4	450.0	45.00	22.50	9.000	4.500	0.900
6	1000	100.0	50.00	20.00	10.00	2.000

US units

DN [in]	1:1 [lb/min]	1:10 [lb/min]	1:20 [lb/min]	1:50 [lb/min]	1:100 [lb/min]	1:500 [lb/min]
1/24"	0.735	0.074	0.037	0.015	0.007	0.001
1/12"	3.675	0.368	0.184	0.074	0.037	0.007
1/8"	16.54	1.654	0.827	0.330	0.165	0.033
1/4"	36.75	3.675	1.838	0.735	0.368	0.074

Accuracy of outputs

o.r. = of reading; o.f.s. = of full scale value

The output accuracy must be factored into the measured error if analog outputs are used, but can be ignored for fieldbus outputs (e.g. Modbus RS485).

*Current output*Accuracy: Max. ± 0.05 % o.f.s. or ± 5 μA *Pulse/frequency output*Accuracy: Max. ± 50 % ppm o.r.**Repeatability**

Design fundamentals → 9

o.r. = of reading; $1 \text{ g/cm}^3 = 1 \text{ kg/l}$; T = fluid temperature**Base repeatability****Mass flow and volume flow (liquids)**

- $\pm 0.05\%$ o.r. (mass flow)
- $\pm 0.05\%$ o.r. (volume flow)

Mass flow (gases)

- $\pm 0.25\%$ o.r. (mass flow)

Density (liquids)

- $\pm 0.00025 \text{ g/cm}^3$

Temperature $\pm 0.25 \text{ }^\circ\text{C} \pm 0.0025 \cdot T \text{ }^\circ\text{C}$ ($\pm 0.45 \text{ }^\circ\text{F} \pm 0.0015 \cdot (T - 32) \text{ }^\circ\text{F}$)**Response time**

- The response time depends on the configuration (damping).
- Response time in the event of erratic changes in the measured variable (only mass flow): after 100 ms 95 % of the full scale value.

Influence of medium temperatureWhen there is a difference between the temperature for zero point adjustment and the process temperature, the typical measured error is $\pm 0.0002\%$ of the full scale value / $^\circ\text{C}$ ($\pm 0.0001\%$ of the full scale value / $^\circ\text{F}$).**Influence of medium pressure**

The tables below shows the effect on accuracy of mass flow due to a difference between calibration pressure and process pressure.

DN		Medium pressure	
[mm]	[in]	[% o.r./bar]	[% o.r./psi]
1	1/24"	-0.001	-0.00007
2	1/12"	0	0
4	1/8"	-0.005	-0.0004
6	1/4"	-0.003	-0.0002

Design fundamentals

o.r. = of reading
 BaseAccu = base accuracy in % o.r.
 BaseRepeat = base repeatability in % o.r.
 MeasValue = measured value (in flow units consistent with the zero point stability value → 7)
 ZeroPoint = zero point stability

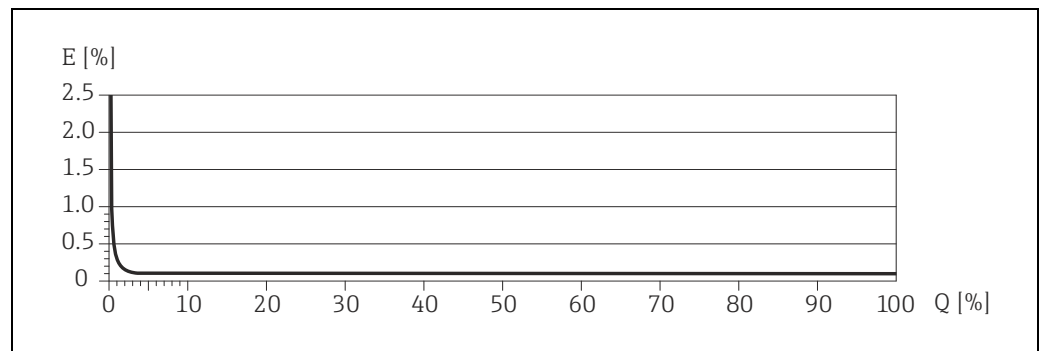
Calculation of the maximum measured error depending on flowrate

Flowrate (in flow units consistent with the zero point stability value → 7)	Maximum measured error in % o.r.
$\geq \frac{\text{ZeroPoint}}{\text{BaseAccu}} \cdot 100$ <small>A0021332</small>	$\pm \text{BaseAccu}$ <small>A0021339</small>
$< \frac{\text{ZeroPoint}}{\text{BaseAccu}} \cdot 100$ <small>A0021333</small>	$\pm \frac{\text{ZeroPoint}}{\text{MeasValue}} \cdot 100$ <small>A0021334</small>

Calculation of the repeatability depending on flowrate

Flowrate (in flow units consistent with the zero point stability value → 7)	Repeatability in % o.r.
$\geq \frac{1/2 \cdot \text{ZeroPoint}}{\text{BaseRepeat}} \cdot 100$ <small>A0021335</small>	$\pm \text{BaseRepeat}$ <small>A0021340</small>
$< \frac{1/2 \cdot \text{ZeroPoint}}{\text{BaseRepeat}} \cdot 100$ <small>A0021336</small>	$\pm 1/2 \cdot \frac{\text{ZeroPoint}}{\text{MeasValue}} \cdot 100$ <small>A0021337</small>

Example for maximum measured error



E = Error: Maximum measured error as % o.r.
 Q = Flow rate as %

Installation

Installation instructions

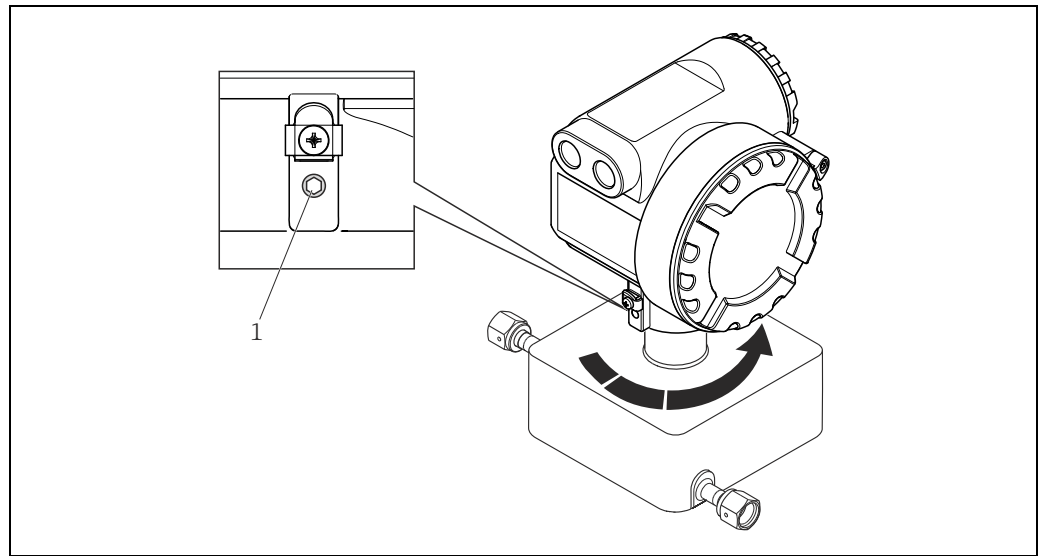
- Note the following points:
- The measuring device is designed for mounting on tabletops, walls or pipes.
 - The high oscillation frequency of the measuring tubes ensures that the correct operation of the measuring system is not influenced by pipe vibrations.
 - No special precautions need to be taken for fittings which create turbulence (valves, elbows, T-pieces etc.) as long as no cavitation occurs.

Inlet and outlet runs

There are no installation requirements regarding inlet and outlet runs. If possible, mount the sensor upstream of fittings such as valves, T-pieces, elbows etc.

Special installation instructions

Rotating the transmitter housing



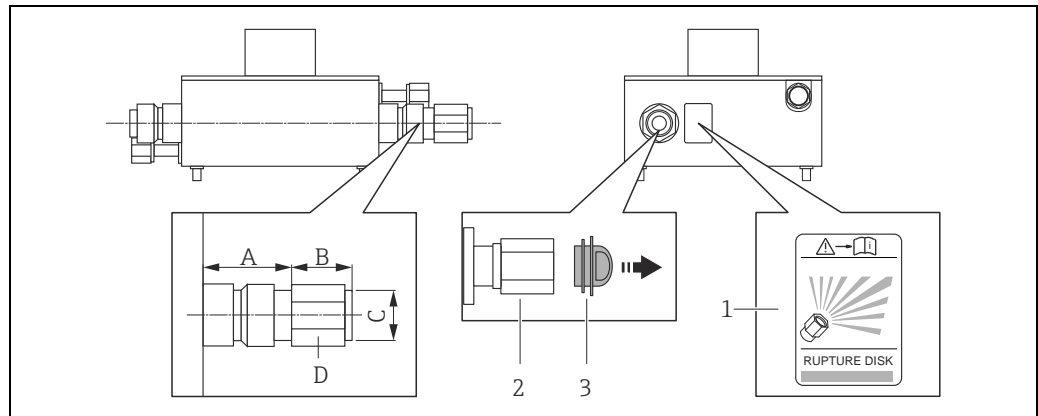
Rotating the transmitter housing

1 = Allen screw

Rupture disk

Make sure that the function and operation of the rupture disk is not impeded through the installation of the device. The position of the rupture disk is indicated on a sticker beside it. For additional information that is relevant to the process (→ 10).

The existing connecting nozzles are not intended for the purpose of rinsing or pressure monitoring, but instead serve as the mounting location for the rupture disk.



1 Rupture disk label

2 Rupture disk with ½" NPT internal thread with 1" width across flat

3 Transport protection

Dimensions in SI units

DN	A	B	C	D
1 to 6	33	Approx. 42	½" NPT	AF 1"

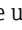
All dimensions in [mm]

Dimensions in US units

DN	A	B	C	D
1/24 to 1/4"	1.3	Approx. 1.65	1/2" NPT	AF 1"

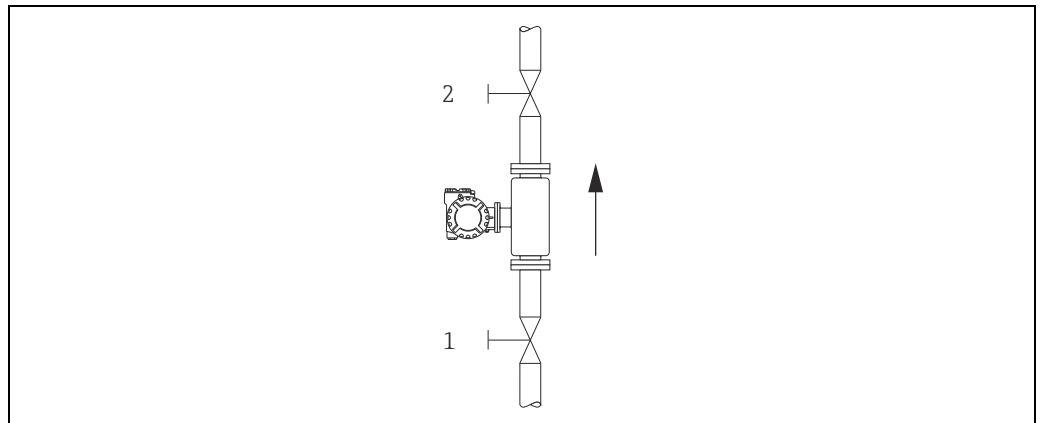
All dimensions in [in]

Zero point adjustment

All measuring devices are calibrated accordance with state-of-the-art technology. Calibration takes place under reference conditions (→  7). Therefore, a zero point adjustment in the field is generally **not** required.

If a zero point adjustment is desired, please note the following points before performing one:

- Adjustment can only be performed under stable pressure conditions.
- The zero point adjustment takes place at zero flow. This can be achieved, for example, with shutoff valves upstream and/or downstream of the sensor or by using existing valves and gates.
 - Normal operation → valves 1 and 2 open
 - Zero point adjustment *with* process pressure → Valve 1 open / valve 2 closed
 - Zero point adjustment *without* process pressure → Valve 1 closed / valve 2 open
- A zero point adjustment is **not** possible if an error message is present.



A0013096

Zero point adjustment and shutoff valves

Environment**Ambient temperature range**

Sensor and transmitter:

- Standard: -20 to +60 °C (-4 to +140 °F)



Note!

- Install the device in a shady location. Avoid direct sunlight, particularly in warm climatic regions.

Storage temperature

-40 to +80 °C (-40 to +175 °F), preferably at +20 °C (+68 °F)

Degree of protection

Standard: IP 67 (NEMA 4X) for transmitter and sensor

Shock resistance

According to IEC/EN 60068-2-31

Vibration resistance

Acceleration up to 1 g, 10 to 150 Hz, following IEC/EN 60068-2-6

CIP cleaning

Yes

SIP cleaning Yes

Electromagnetic compatibility (EMC) As per IEC/EN 61326 and NAMUR Recommendation NE 21

Process

Medium temperature range **Sensor**

- Standard version: -50 to +200 °C (-58 to +392 °F)
- Short neck version: -50 to +125 °C (-58 to +257 °F)

Seals

- Only for mounting kits with threaded connections:
 - Viton: -15 to 200 °C (-5 to +392 °F)
 - EPDM: -40 to +160 °C (-40 to +320 °F)
 - Silicone: -60 to +200 °C (-76 to +392 °F)
 - Kalrez: -20 to +275 °C (-4 to +527 °F)

Secondary containment pressure rating The sensor housing is filled with dry nitrogen and protects the electronics and mechanics inside. The following secondary containment pressure rating is only valid for a fully welded sensor housing and/or a device equipped with closed purge connections (never opened, as delivered).

DN		Secondary containment rating (designed with a safety factor ≥ 4)		Burst pressure of secondary containment	
[mm]	[in]	[bar]	[psi]	[bar]	[psi]
1	1/24"	40	580	190	2780
2	1/12"	40	580	190	2780
4	1/8"	40	580	190	2780
6	1/4"	40	580	190	2780



Note!

In case a danger of measuring tube failure exists due to process characteristics, e.g. with corrosive process fluids, we recommend the use of sensors whose secondary containment is equipped with special pressure monitoring connections (ordering option). With the help of these connections, fluid collected in the secondary containment in the event of tube failure can be bled off. This is especially important in high pressure gas applications. These connections can also be used for gas circulation and/or gas detection (dimensions → 20).

Do not open the purge connections unless the containment can be filled immediately with a dry inert gas. Use only low gauge pressure to purge. Maximum pressure: 5 bar (72.5 psi).

If a device fitted with purge connections is connected to the purge system, the maximum nominal pressure is determined by the purge system itself or by the device, depending on which component has the lower nominal pressure. If, on the other hand, the device is fitted with a rupture disk, the rupture disk is decisive for the maximum nominal pressure (→ 14).

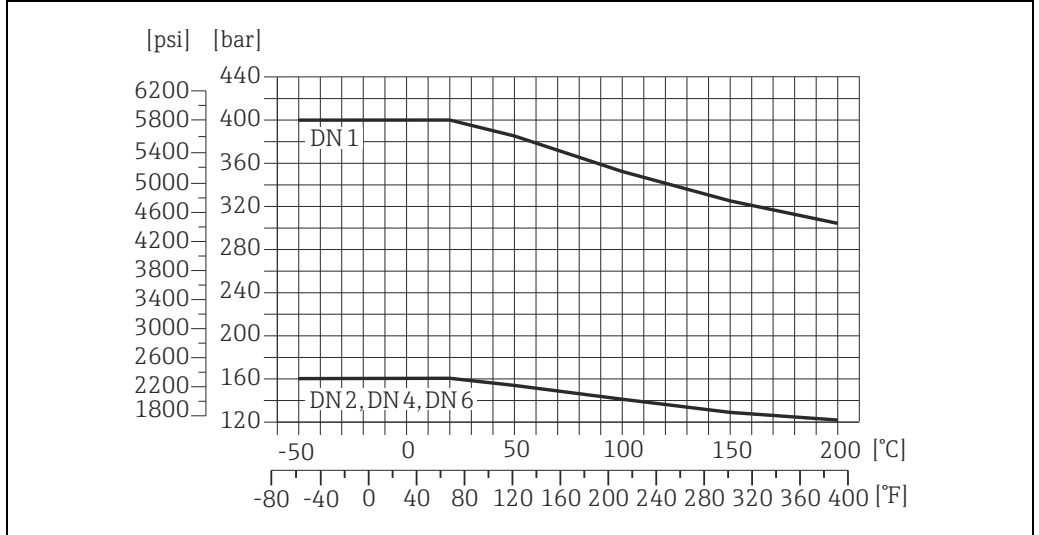
Pressure-temperature ratings

The following pressure-temperature ratings relate to the entire measuring device and not just to the process connection.

4-VCO-4 coupling (welded, DN 1 to 4)

8-VCO-4 coupling (welded, DN 6)

Connection material: 1.4539 (904L)

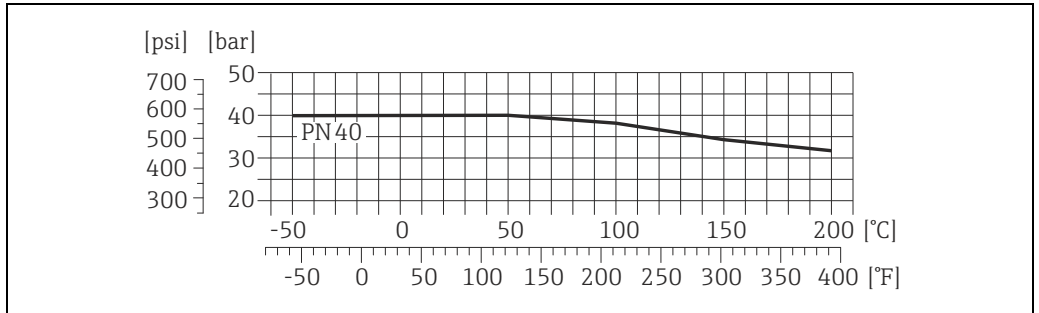


A0021001-EN

VCO coupling with mounting kit: Flange according to EN 1092-1 (DIN 2501)

Wetted parts (flange, measuring tube): 1.4539 (904L)

Loose flanges (not wetted): 1.4404 (316/316L)

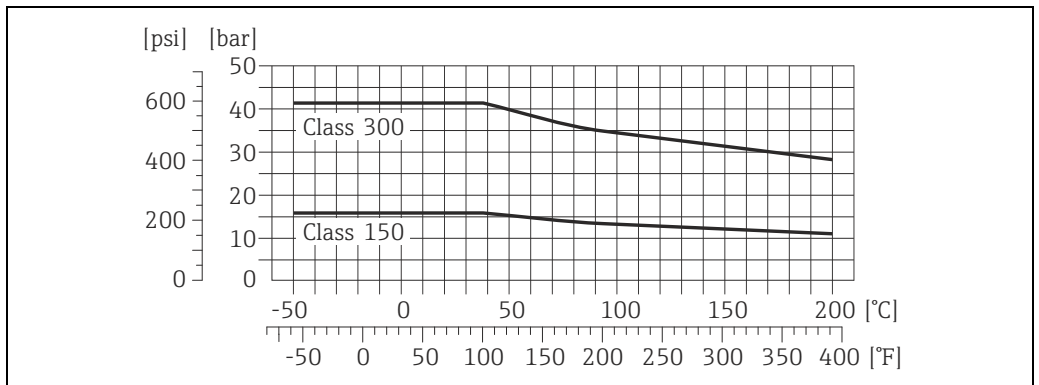


A0021002-EN

VCO coupling with mounting kit: Flange according to ASME B16.5

Wetted parts (flange, measuring tube): 1.4539 (904L)

Loose flanges (not wetted): 1.4404 (316/316L)

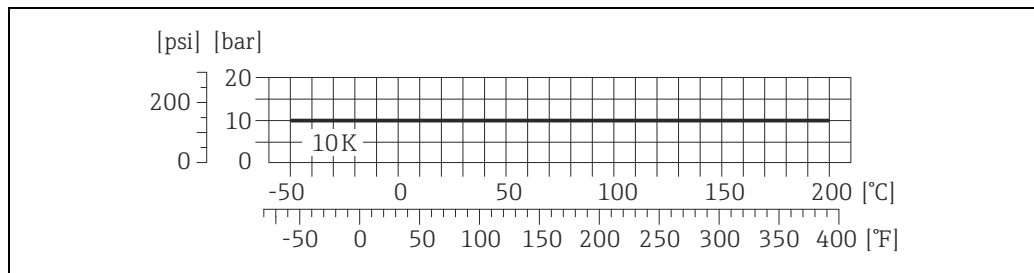


A0020920-EN

VCO coupling with mounting kit: JIS B2220, flange

Wetted parts (flange, measuring tube): 1.4539 (904L)

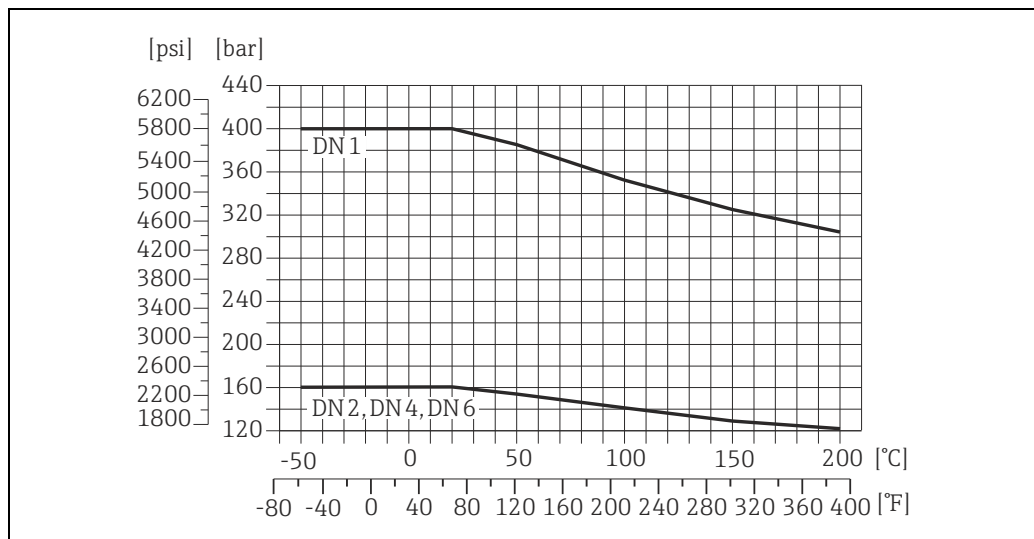
Loose flanges (not wetted): 1.4404 (316/316L)



A0021003-EN

4-VCO-4 coupling with mounting kit: NPTF threaded adapter, 1/4" (DN 1 to 4)**4-VCO-8 coupling with mounting kit: NPTF threaded adapter, 1/2" (DN 6)**

Connection material: 1.4539 (904L)



A0021001-EN

Rupture disk

To increase the level of safety, a device version with a rupture disk with a triggering pressure of 10 to 15 bar (145 to 217.5 psi) can be used. Special mounting instructions: (→ 10).

Limiting flow

→ 4, "Measuring range"

Pressure loss

To calculate the pressure loss, use the *Applicator* sizing tool (→ 23).

System pressure

It is important to ensure that cavitation does not occur as it could influence the oscillation of the measuring tube. No special measures need to be taken for fluids which have properties similar to water under normal conditions.

In the case of liquids with a low boiling point (hydrocarbons, solvents, liquefied gases) or in suction lines, it is important to ensure that pressure does not drop below the vapour pressure and that the liquid does not start to boil. It is also important to ensure that the gases that occur naturally in many liquids do not outgas. Such effects can be prevented when system pressure is sufficiently high.

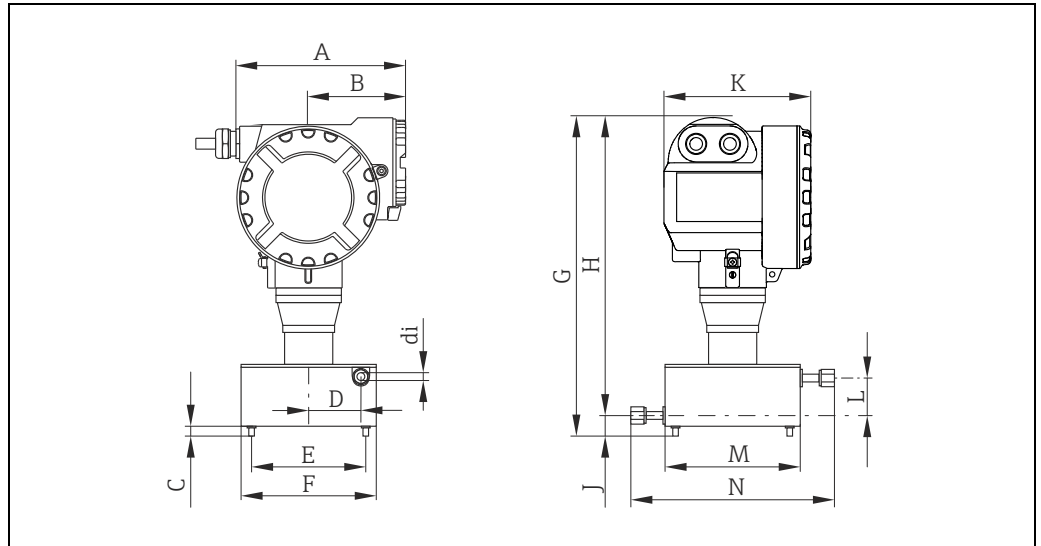
Consequently, it is generally best to install the sensor:

- On the pump pressure side (no risk of vacuum)
- At the lowest point in a riser

Mechanical construction

Design/dimensions

Field housing compact version (non-hazardous area II2G / zone 1)



A0013129

Dimensions in SI units

DN	A	B	C	D	E	F	G	H	J	K	L	M	N	di
1	160	92	10	40	90	120	292/ 226 ¹	271/ 205 ¹	22	168	30	120	175	1.3
2														2
4														3.9
6														5.35

¹ Short neck version
 DN 1 to 4: 4-VCO-4
 DN 6: 8-VCO-4
 All dimensions in [mm]

Dimensions in US units

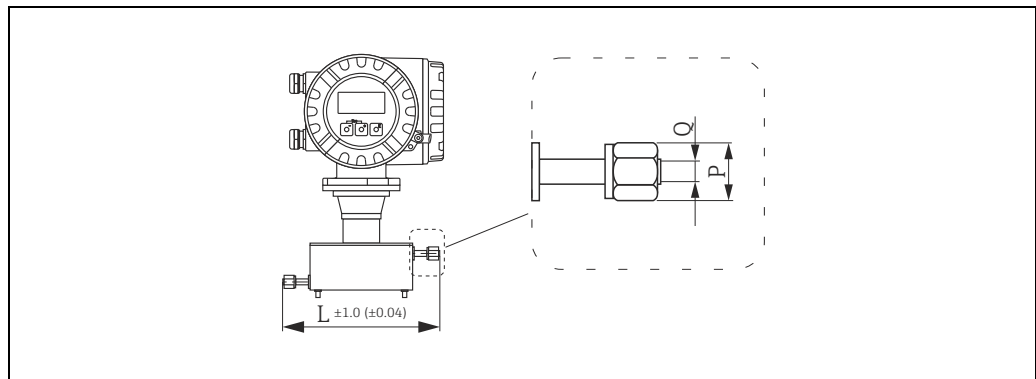
DN	A	B	C	D	E	F	G	H	J	K	L	M	N	di
1/24"	6.30	3.62	0.39	1.57	3.54	4.72	11.5/ 8.90 ¹	10.7/ 8.07 ¹	0.87	6.61	1.18	4.72	6.89	0.05
1/12"														0.08
1/8"														0.15
1/4"														0.21

¹ Short neck version
 DN 1/24" to 1/8": 4-VCO-4
 DN 1/4": 8-VCO-4
 All dimensions in [in]

Process connections in SI units

4-VCO-4 coupling (welded, DN 1 to 4)

8-VCO-4 coupling (welded, DN 6)



A0012329

Engineering unit mm (in)

4-VCO-4 coupling (welded, DN 1 to 4): 1.4539 (904L)

Order code for "process connection", option A

8-VCO-4 coupling (welded, DN 6): 1.4539 (904L)

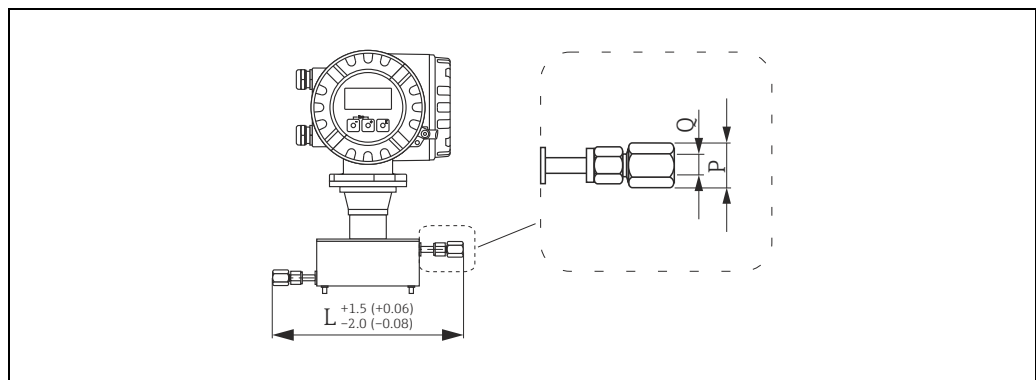
Order code for "process connection", option B

DN	L	P	Q
1 to 4	175	AF 11/16"	12.5
6	175	AF 1"	20

All dimensions in [mm]

4-VCO-4 coupling with mounting kit: NPTF threaded adapter, 1/4" (DN 1 to 4)

8-VCO-4 coupling with mounting kit: NPTF threaded adapter, 1/2" (DN 6)



A0012332

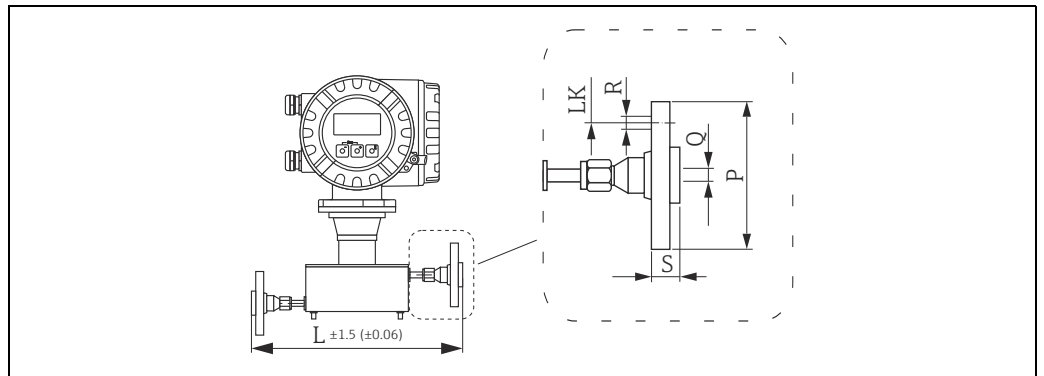
Engineering unit mm (in)

4-VCO-4 coupling with mounting kit: NPTF threaded adapter, 1/4": 1.4539 (904L)

DN	L	P	Q
1 to 4	246	AF 3/4"	1/4" NPTF
6	246	AF 1 1/16"	1/2" NPTF

All dimensions in [mm]

4-VCO-4 / 8-VCO-4 coupling with mounting kit: Flange according to EN1092-1 (DIN 2501)
 4-VCO-4 / 8-VCO-4 coupling with mounting kit: 1/2" flange according to ASME B16.5
 4-VCO-4 / 8-VCO-4 coupling with mounting kit: JIS B2220, DN 15 flange



Engineering unit mm (in)

A0012330

4-VCO-4 / 8-VCO-4 coupling with mounting kit: Flange according to EN1092-1 (DIN 2501), PN 40: 1.4539 (904L)							
DN	PN	L	P	Q	R	S	LK
1 to 6	40	278	95	17.3	4 × Ø 14	28	65

All dimensions in [mm]

4-VCO-4 / 8-VCO-4 coupling with mounting kit: 1/2" flange according to ASME B16.5: 1.4539 (904L)							
DN	ASME	L	P	Q	R	S	LK
1 to 6	Cl 150	278	88.9	15.7	4 × Ø 15.7	17.7	60.5
1 to 6	Cl 300	278	95.2	15.7	4 × Ø 15.7	20.7	66.5

Loose flanges (not wetted) made from stainless steel 1.4404 (316/316L)
 All dimensions in [mm]

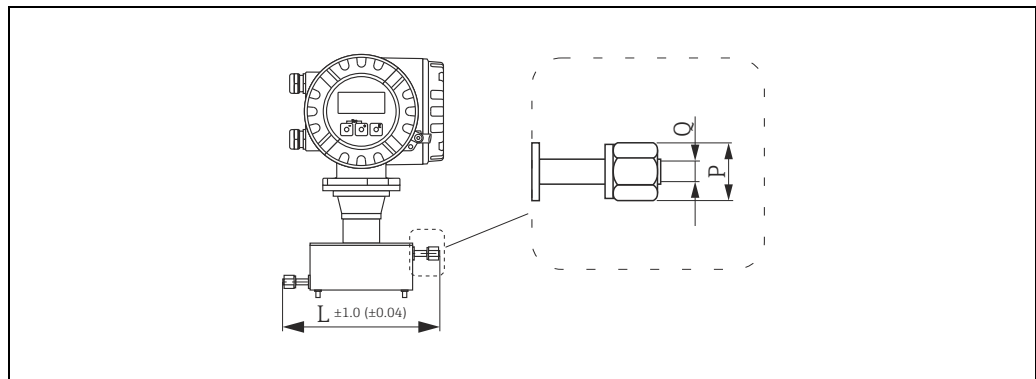
4-VCO-4 / 8-VCO-4 coupling with mounting kit: JIS B2220, DN 15 flange: 1.4539 (904L)							
DN	JIS	L	P	Q	R	S	LK
1 to 6	10K	278	95	15	4 × Ø 15	28	70

All dimensions in [mm]

Process connections in US units

4-VCO-4 coupling (welded, DN 1/24 to 1/8")

8-VCO-4 coupling (welded, DN 1/4")



A0012329

Engineering unit mm (in)

4-VCO-4 coupling (welded, DN 1/24 to 1/8"): 1.4539 (904L)

Order code for "process connection", option A

8-VCO-4 coupling (welded, DN 1/4"): 1.4539 (904L)

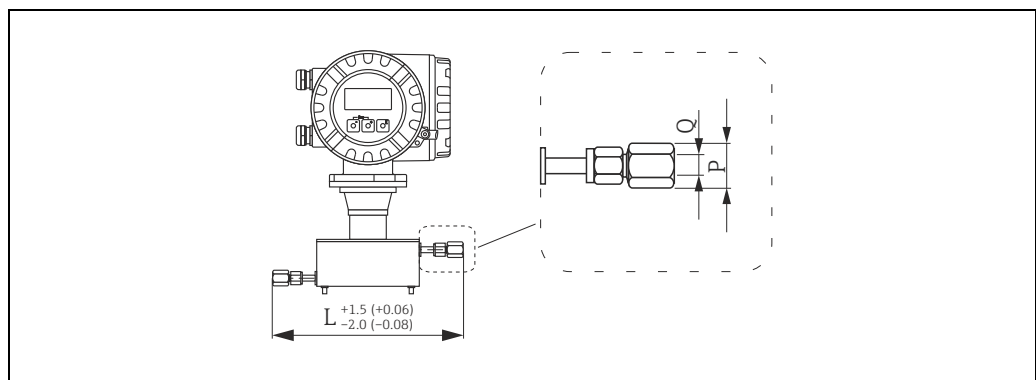
Order code for "process connection", option B

DN	L	P	Q
1/24 to 1/8"	6.89	AF 11/16"	0.49
1/4"	6.89	AF 1"	0.79

All dimensions in [in]

4-VCO-4 coupling with mounting kit: NPTF threaded adapter, 1/4" (DN 1/24 to 1/8")

8-VCO-4 coupling with mounting kit: NPTF threaded adapter, 1/2" (DN 1/4")



A0012332

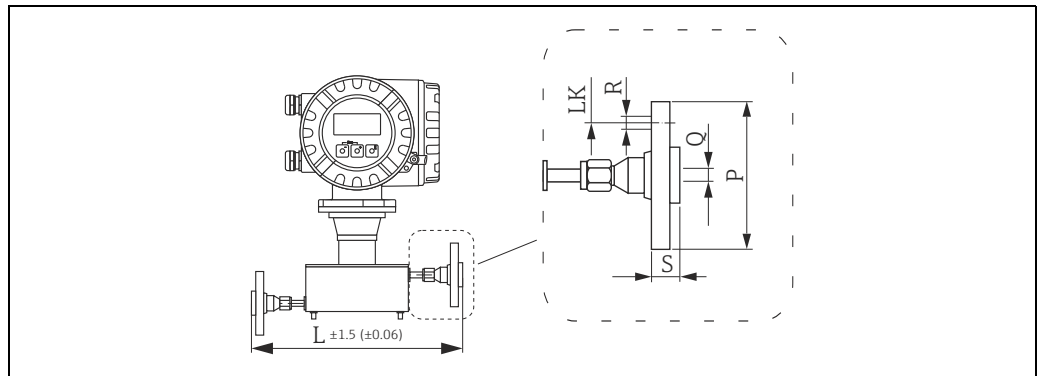
Engineering unit mm (in)

8-VCO-4 coupling with mounting kit: NPTF threaded adapter, 1/2": 1.4539 (904L)

DN	L	P	Q
1/24 to 1/8"	9.69	AF 3/4"	1/4" NPTF
1/4"	9.69	AF 1 1/16"	1/2" NPTF

All dimensions in [in]

4-VCO-4 / 8-VCO-4 coupling with mounting kit: Flange according to EN1092-1 (DIN 2501)
 4-VCO-4 / 8-VCO-4 coupling with mounting kit: 1/2" flange according to ASME B16.5
 4-VCO-4 / 8-VCO-4 coupling with mounting kit: JIS B2220, DN 15 flange



Engineering unit mm (in)

A0012330

4-VCO-4 / 8-VCO-4 coupling with mounting kit: Flange according to EN1092-1 (DIN 2501), PN 40: 1.4539 (904L)

DN	PN	L	P	Q	R	S	LK
1/24 to 1/4"	40	11	3.74	0.68	4 × Ø 0.55	1.10	2.56

All dimensions in [in]

4-VCO-4 / 8-VCO-4 coupling with mounting kit: 1/2" flange according to ASME B16.5: 1.4539 (904L)

DN	ASME	L	P	Q	R	S	LK
1/24 to 1/4"	Cl 150	11	3.50	0.62	4 × Ø 0.62	0.70	2.38
1/24 to 1/4"	Cl 300	11	3.75	0.62	4 × Ø 0.62	0.82	2.62

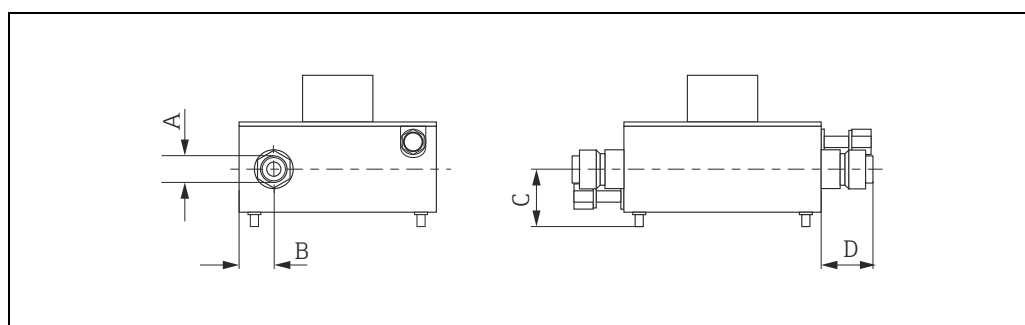
Loose flanges (not wetted) made from stainless steel 1.4404 (316/316L)
 All dimensions in [in]

4-VCO-4 / 8-VCO-4 coupling with mounting kit: JIS B220, DN 15 flange: 1.4539 (904L)

DN	JIS	L	P	Q	R	S	LK
1/24 to 1/4"	10K	11	3.74	0.59	4 × Ø 0.59	1.10	2.76

All dimensions in [in]

Purge connections / secondary containment monitoring



A0012335

Dimensions in SI units

DN	A	B	C	D
1 to 6	½" NPT	30	37	33

All dimensions in [mm]

Dimensions in US units

DN	A	B	C	D
¼ to ¼"	½" NPT	1.18	1.46	1.30

All dimensions in [in]

Weight

Compact version	
[kg]	[lb]
5.0	11.0

Material

Transmitter housing

- Aluminium housing: powder-coated die-cast aluminium

Sensor housing / secondary containment

- Acid-resistant and alkali-resistant external surface, stainless steel 1.4301 (304)

Process connections

Process connection	Material
4-VCO-4 coupling 4-VCO-8 coupling	Stainless steel, 1.4539 (904L);
Mounting kit: flange according to EN1092-1 (DIN 2501) Mounting kit: flange according to ASME B16.5 Mounting kit: JIS B2220, flange	Stainless steel, 1.4539 (904L); Loose flange (not wetted): stainless steel, 1.4404 (F316/316L)
Mounting kit: NPTF threaded adapter ¼" Mounting kit: NPTF threaded adapter ½"	Stainless steel, 1.4539 (904L);

Measuring tube

- 1.4539 (904L)

Seals for mounting set

- Viton
- EPDM
- Silicone
- Kalrez

Process connections

- Welded process connections
 - 4-VCO-4 -coupling (DN 1 to 4)
 - 8-VCO-4 coupling (DN 6)
- Threaded process connections
 - Flange according to EN1092-1 (DIN 2501)
 - Flange according to ASME B16.5
 - JIS B2220, flange
 - NPTF threaded adapter, ¼", (DN 1 to 4)
 - NPTF threaded adapter, ½", (DN 6)

Operability

Local display**Display elements**

Status LED

Remote operation

Operation takes place using the "FieldCare" configuration and service program from Endress+Hauser and the MODBUS RS485, which can be used to configure parameters for functions and read measuring values.

Certificates and approvals

CE mark

The measuring system is in conformity with the statutory requirements of the EC Directives. Endress+Hauser confirms successful testing of the device by affixing to it the CE mark.

C-Tick symbol

The measuring system meets the EMC requirements of the Australian Communications and Media Authority (ACMA).

Ex approval

Information about currently available Ex versions (ATEX, NEC/CEC etc.) can be supplied by your Endress+Hauser sales office on request. All information relevant to explosion protection is available in separate Ex documents that you can order as necessary.

Modbus certification

The measuring device meets all the requirements of the Modbus/TCP conformity and integration test and has the "Modbus/TCP Conformance Test Policy, Version 2.0". The measuring device has successfully passed all the test procedures carried out and is certified by the "Modbus/TCP Conformance Test Laboratory" of the University of Michigan.

Functional safety

SIL 2: in accordance with IEC 61508/IEC 61511-1 (FDIS)

Pressure measuring device approval

The measuring devices can be ordered with or without PED (Pressure Equipment Directive). If a device with PED is required, this must be ordered explicitly. For devices with nominal diameters less than or equal to DN 25 (1"), this is neither possible nor necessary.

- With the identification PED/G1/III on the sensor nameplate, Endress+Hauser confirms conformity with the "Basic safety requirements" of Appendix I of the Pressure Equipment Directive 97/23/EC.
- Devices with this identification (with PED) are suitable for the following types of fluid:
 - Fluids of Group 1 and 2 with a steam pressure greater than, or smaller and equal to 0.5 bar (7.3 psi)
 - Unstable gases
- Devices without this identification (without PED) are designed and manufactured according to good engineering practice. They correspond to the requirements of Art. 3, Section 3 of the Pressure Equipment Directive 97/23/EC. Their application is illustrated in Diagrams 6 to 9 in Appendix II of the Pressure Equipment Directive 97/23/EC.

Other standards and guidelines

- EN 60529: Degrees of protection provided by enclosures (IP code)
- EN 61010-1: Safety requirements for electrical equipment for measurement, control and laboratory use
- IEC/EN 61326: Electromagnetic compatibility (EMC requirements)
- NAMUR Recommendation NE 21: Electromagnetic compatibility (EMC) of industrial process and laboratory control equipment
- NAMUR Recommendation NE 43: Standardization of the signal level for the breakdown information of digital transmitters with analog output signal
- NAMUR Recommendation NE 53: Software of field devices and signal-processing devices with digital electronics

Ordering Information

Detailed ordering information is available from the following sources:

- In the Product Configurator on the Endress+Hauser website: www.endress.com → Select country → Instruments → Select device → Product page function: Configure this product
- From your Endress+Hauser Sales Center: www.endress.com/worldwide



Note!

Product Configurator - the tool for individual product configuration

- Up-to-the-minute configuration data
- Depending on the device: Direct input of measuring point-specific information such as measuring range or operating language
- Automatic verification of exclusion criteria
- Automatic creation of the order code and its breakdown in PDF or Excel output format
- Ability to order directly in the Endress+Hauser Online Shop

Accessories

Various accessories, which can be ordered with the device or subsequently from Endress+Hauser, are available for the device. Detailed information on the order code in question is available from your local Endress+Hauser sales center or on the product page of the Endress+Hauser website: www.endress.com.

Device-specific accessories

For the Transmitter

Accessories	Description
Electronics module	Complete plug-in electronics module.

For the Sensor

Accessories	Description
Mounting set for sensor	Mounting set, comprising: <ul style="list-style-type: none"> - 2 process connections - Seals
Mounting plate for sensor	Mounting plate, comprising: <ul style="list-style-type: none"> - mounting plate - 4 × M5

Service-specific accessories

Accessories	Description
Applicator	Software for selecting and sizing Endress+Hauser measuring devices: <ul style="list-style-type: none"> ▪ Calculation of all the necessary data for identifying the optimum flowmeter: e.g. nominal diameter, pressure loss, accuracy or process connections ▪ Graphic illustration of the calculation results Administration, documentation and access to all project-related data and parameters over the entire life cycle of a project. Applicator is available: <ul style="list-style-type: none"> ▪ Via the Internet: https://wapps.endress.com/applicator ▪ On CD-ROM for local PC installation
W@M	Life cycle management for your plant. W@M supports you with a wide range of software applications over the entire process: from planning and procurement, to the installation, commissioning and operation of the measuring devices. All the relevant device information, such as the device status, spare parts and device-specific documentation, is available for every device over the entire life cycle. The application already contains the data of your Endress+Hauser device. Endress+Hauser also takes care of maintaining and updating the data records. W@M is available: <ul style="list-style-type: none"> ▪ Via the Internet: www.endress.com/lifecyclemanagement ▪ On CD-ROM for local PC installation
Fieldcheck	Tester/simulator for testing flowmeters in the field. When used in conjunction with the "FieldCare" software package, test results can be imported into a database, printed and used for official certification. Contact your Endress+Hauser representative for more information.
FieldCare	FieldCare is Endress+Hauser's FDT-based plant asset management tool and allows the configuration and diagnosis of intelligent field devices. By using status information, you also have a simple but effective tool for monitoring devices. The Proline flowmeters are accessed via a service interface or via the service interface FXA193.
FXA291	Service interface from the measuring device to the PC for operation via FieldCare.

System components

Accessories	Description
Memograph M graphic display recorder	The Memograph M graphic display recorder provides information on all the relevant process variables. Measured values are recorded correctly, limit values are monitored and measuring points analysed. The data are stored in the 256 MB internal memory and also on a DSD card or USB stick. Memograph M boasts a modular design, intuitive operation and a comprehensive security concept. The ReadWin® 2000 PC software is part of the standard package and is used for configuring, visualizing and archiving the data captured. The mathematics channels which are optionally available enable continuous monitoring of specific power consumption, boiler efficiency and other parameters which are important for efficient energy management.

Documentation

- Flow measurement (FA00005D/06)
- System Information Promass (SI00032D/06)
- Operating Instructions MODBUS RS485 (BA00142D/06)
- Description of Device Parameters MODBUS RS485 (GP00005D/06)
- Ex-Supplementary documentation ATEX (II2G): (XA00146D/06)
- Ex-Supplementary documentation NEC/CEC (Div. 1): (XA00147D/06)
- Ex-Supplementary documentation NEPSI (Zone 1, Zone 21): (XA00148D/06)

Registered trademarks

KALREZ® and VITON®

Registered trademarks of E.I. Du Pont de Nemours & Co., Wilmington, USA

Modbus®

Registered trademark of the SCHNEIDER AUTOMATION, INC.

Applicator®, FieldCare®, Fieldcheck®, HistoROM™, S-DAT®

Registered or registration-pending trademarks of the Endress+Hauser Group

www.addresses.endress.com
