

Field Xpert® SMT70

Universal, high-performance
device configuration tablet PC



User-centered design

Intuitive configuration of all field devices

Rugged revolution – slim, light and strong the device configuration tablet PC Field Xpert SMT70 enables mobile Plant Asset Management in hazardous and non-hazardous areas. It is ideal for commissioning and maintenance staff to manage field instruments with digital communication interface and to document the work progress.

Out of the box – ready to go this tablet PC comes as a complete solution and provides a touch-optimized “tool” to easily manage field instruments during their entire life cycle saving time and cost per device. It provides pre-installed driver libraries and access to the Industrial Internet of Things (IIoT) as well as life cycle instrument information and documentation.

With one-click connection Field Xpert SMT70 provides a modern software user interface and offers online update capabilities, based on a multipurpose and secure Microsoft® Windows® 10 environment.



Supports Heartbeat verification!



Field Xpert SMT70



User-centered design focuses on ease of use

✓ Highlights:

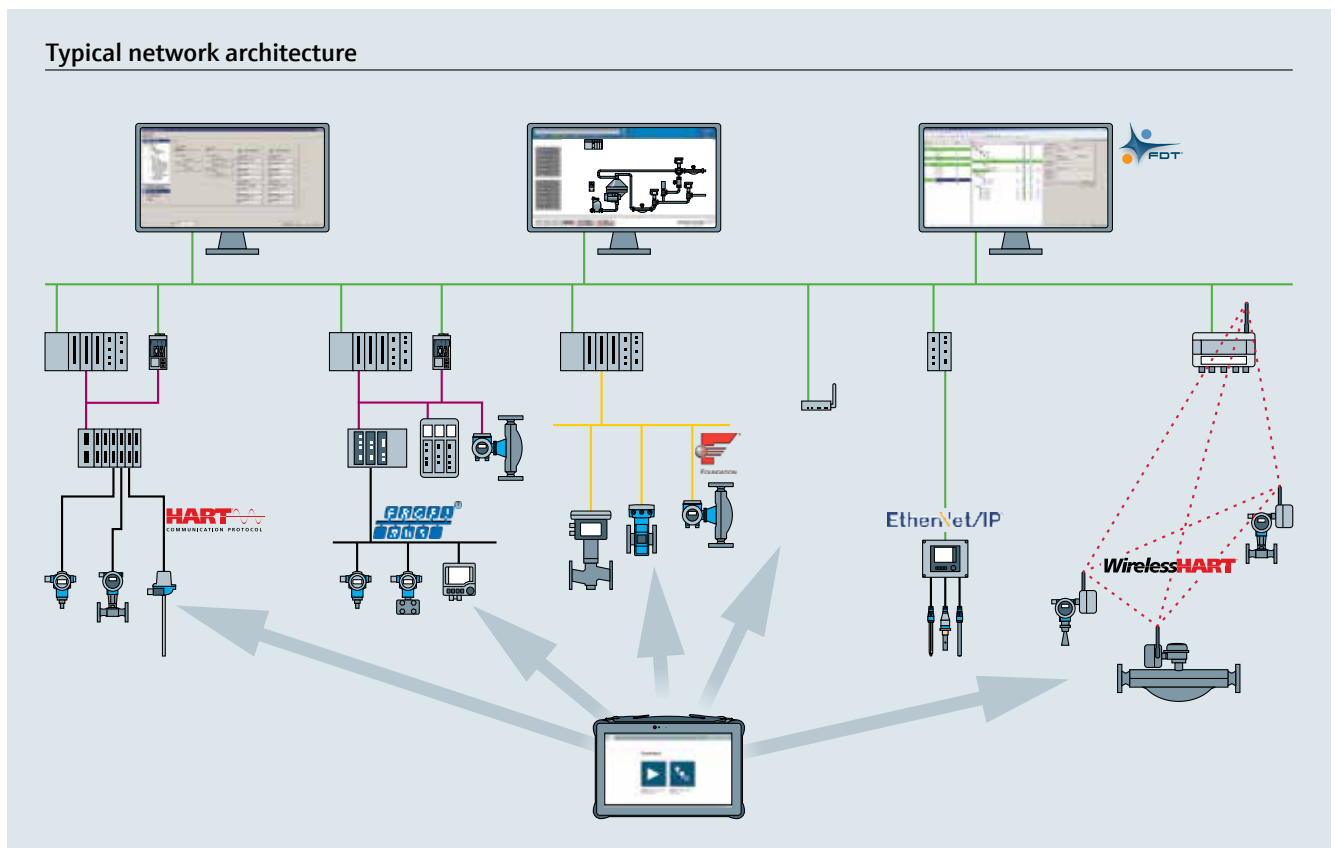
- High-performance, robust tablet with large 11.6" display and a battery runtime of up to 14 hours.
- Touch-enabled device configuration software in 20 languages. Includes NAMUR NE 107 instrument diagnosis.
- Pre-installed device driver libraries for all of the important industrial protocols.
- Fast connection to devices with a single click.
- Automatic hardware detection saves time.
- Integrated Heartbeat verification including PDF documentation.
- Online application software update service offers new functionality and maximum security.

i Technical data:

- 11.6" sunlight readable multi-touch HD display
- Intel® i5, 8 GB RAM, 256 GB SSD
- IP65, MIL-STD810, -10...55 °C, 5...95 % humidity
- Windows 10 Pro
- 5 MP auto focus camera with LED flash light
- 2 MP front facing camera
- WiFi 802.11 a/b/g/n/ac / Bluetooth® 4.0 LE, Class 1
- 4G LTE, GPS (optional)
- 2 x USB 3.0
- Micro SD card slot (SDHC + SDXC)
- Up to 7 h (optional 14 h) operating time
- 298 x 192 x 20 mm
- 2.65 lbs (1.2 kg)
- Optional docking station
(1 Gbit Ethernet, 4 x USB and HDMI connection)

One-click connectivity

Easy connection



Field Xpert SMT70 communicating with HART, PROFIBUS, FOUNDATION Fieldbus as well as WirelessHART® (and much more) field devices

The fastest way to configure any field device via fieldbus protocols and Endress+Hauser service protocols

Multiprotocol support offers proven combination of hardware, software and communication interfaces.

Connection to a device:

- Point-to-point via USB or Bluetooth modem
- Network via gateways, remote IOs, multiplexer

Supported communication technologies:

- HART®
- PROFIBUS® DP/PA
- FOUNDATION™ Fieldbus
- Modbus®
- CDI
- Endress+Hauser service interfaces (incl. firmware flashing)

Supported hardware interfaces:

- Commubox FXA195 (HART)
- MACTek Bluetooth modem (HART)
- PROFibus (PROFIBUS DP)
- Fieldgate® SFG500 (PROFIBUS DP)
- FFusb (FF-H1)
- Commubox FXA291 (CDI)
- CDI TCP/IP
- Memograph® RSG45 (HART)

Supported field devices:

- All Endress+Hauser and 3rd party devices based on DTM or EDD technology



Supplementary documentation

- FieldCare
Competence Brochure – CP00001S/EN



Give us your feedback:
www.endresslistens.com



USA

Endress+Hauser, Inc.
 2350 Endress Place
 Greenwood, IN 46143
 Tel: 317-535-7138
 888-ENDRESS
 (888-363-7377)
 Fax: 317-535-8498
info@us.endress.com
www.us.endress.com

Canada

Endress+Hauser Canada
 1075 Sutton Drive
 Burlington, ON L7L 5Z8
 Tel: 905-681-9292
 800-668-3199
 Fax: 905-681-9444
info@ca.endress.com
www.ca.endress.com

Mexico

Endress+Hauser México S.A. de C.V.
 Fernando Montes de Oca 21 Edificio A Piso 3
 Fracc. Industrial San Nicolás
 54030 Tlalnepantla de Baz
 Estado de México
 México
 Tel: +52 55 5321 2080
 Fax: +52 55 5321 2099
eh.mexico@mx.endress.com
www.mx.endress.com

Other locations

www.addresses.endress.com